



## Crown reserve management news



*The Living Desert and Sculptures, Broken Hill | Image: Destination NSW*

The situation regarding the COVID-19 outbreak is changing rapidly, and Crown land managers are reminded to regularly check the [NSW Government COVID-19 website](#) to keep updated on all COVID-19 information including current restrictions, case locations, support resources for businesses, vaccinations and more.

The Department of Planning, Industry and Environment – Crown Lands continues to provide additional support to Crown land managers during the COVID-19 restrictions. Please visit the [COVID-19 page](#) or contact us on the below details if you need assistance.

Read on for information on:

- Final call to recognise community heroes caring for Crown reserves
- Keep Australia Beautiful Award applications
- Action Plan for Crown Land 2031 in development
- Adopted Plans of Management
- Notification of native title manager
- Training for Crown land managers
- Closure of applications for CRIF
- New Regional Tourism Activation Fund
- New website connects users with Aboriginal and Torres Strait Islander culture
- Annual reporting reminder

---

## Final call to applaud our community champions



## 2021 Nominations are CLOSING SOON!

Time is running out to apply for a reserve manager award as part of the Community Achievement Awards program. The search is on to give thanks and recognition to our community heroes caring for NSW Crown reserves. There are two award categories which recognise the outstanding contribution of our land managers:

- Crown Land Manager Excellence Award
- Individual Excellence in Crown Land Management Award

Nominations close Wednesday 11 August 2021. [Find out more and nominate.](#)

## Nominate someone for a Keep Australia Beautiful Award



*2020 winner of the Overall Sustainable Communities – Tidy Towns Award, Albury | From left to right: Ctrs Kevin Mack, Michelle Wilkinson and Steven Millet, Albury City Council.*

The Keep Australia Beautiful NSW (KAB NSW) award entries are now open. Since 1981, KAB NSW has rewarded projects around waste management, recycling, heritage, community spirit and other environmental areas across NSW. Entries are open to individuals, groups, associations, businesses, schools, clubs and anyone involved in a sustainable project. There is also a \$3,000 cash prize up for grabs in the 'Return and Earn Litter Prevention Award' category.

For a full list of award categories, the application guide and entry form visit:

- [Sustainable Cities](#) (Metropolitan areas)
- [Sustainable Communities – Tidy Towns](#) (Regional areas)

Applications close Friday 30 July 2021. If you have any questions, please contact [awards@kabnsw.org.au](mailto:awards@kabnsw.org.au).

## Action Plan for *Crown land 2031* in-the-works



Crown Lands is developing the first of three action plans to guide the implementation of *Crown land 2031 – State Strategic Plan for Crown land*, which was launched in June 2021. *Action Plan 2021-23* will be published in September 2021 and will detail focus areas, actions, pilot projects and outcomes to set the foundations to deliver the priorities set out in *Crown land 2031*. Actions are being developed based on what we heard from stakeholders during significant engagement and consultation carried out to develop *Crown land 2031*.

## Narromine Shire Council submits five adopted PoM



*Park on a Crown reserve in Narromine, NSW*

Congratulations to [Narromine Shire Council](#) who have adopted five [Plans of Management](#) (PoM) for all 22 Crown reserves managed by the council. These include two site-specific PoM for Narromine Showground and for Trangie Showground and Racecourse. The council also adopted a generic PoM for Sportsgrounds and Parks and two other generic PoM for reserves categorised as Natural Area and for reserves categorised as General Community Use.

Narromine Shire Council is the second council to complete all PoM for the Crown reserves they manage. We encourage councils to progress with their PoM for community land on Crown reserves and to finalise these as soon as practicable.

There is now a new form to complete to provide [written notice of PoM](#). Councils must complete the form to notify Crown Lands (as landowner) of draft PoM prior to public exhibition. The form can also be used to seek Minister's consent to adopt the

PoM, pending no changes are made following public exhibition. Multiple plans can be included in the form.

## Council to notify of native title manager



Image: Destination NSW

Council Crown land managers are reminded to advise Crown Lands of their nominated native title manager/s, as required each year under section 8.8 of *the Crown Land Management Act 2016*. To notify Crown Lands, please email the name/s of native title manager/s along with their email address and phone number to [council.clm@crowmland.nsw.gov.au](mailto:council.clm@crowmland.nsw.gov.au) as soon as practicable, and no later than 31 October 2021.

## Training for Crown land managers



### ***Free Diploma of Governance for non-council CLMs***

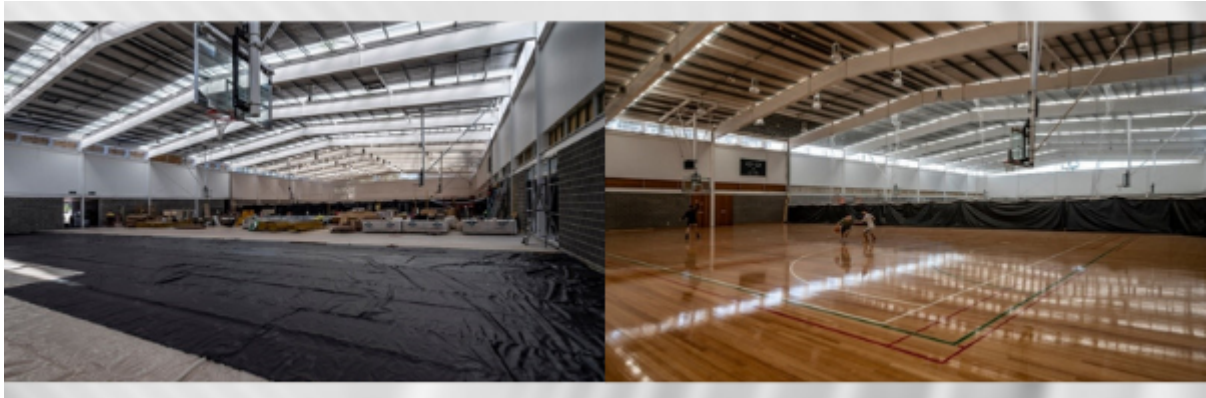
The department is sponsoring 100 free places in a Diploma of Governance course for non-Council Crown land managers and volunteers who assist in the management of Crown reserves, valued at \$4,500 per participant. Applications close Wednesday 4 August 2021. [Find out more.](#)

### ***Interactive workshops***

You are invited to a series of [online workshops](#) to learn more about governance issues and gain practical experience in governance. Upcoming sessions include: *Introduction to Aboriginal Land Care Practices, Conflict Resolution and Negotiation, Reporting Requirements and Waste Less, Save More, Take Action.*

---

## Funding program updates



*Before and after images of works at Perry Park, City of Sydney - CRIF 2020-21*

### **Crown Reserves Improvement Fund - 2021-22 round**

Applications for the 2021-22 Crown Reserves Improvement Fund (CRIF) closed on 25 June 2021. Thank you to all land managers who submitted applications to this year's program. Applications will now undergo vetting and assessment and funding announcements will be made by the Ministers responsible for Crown Lands by December 2021. [Learn more about CRIF.](#)



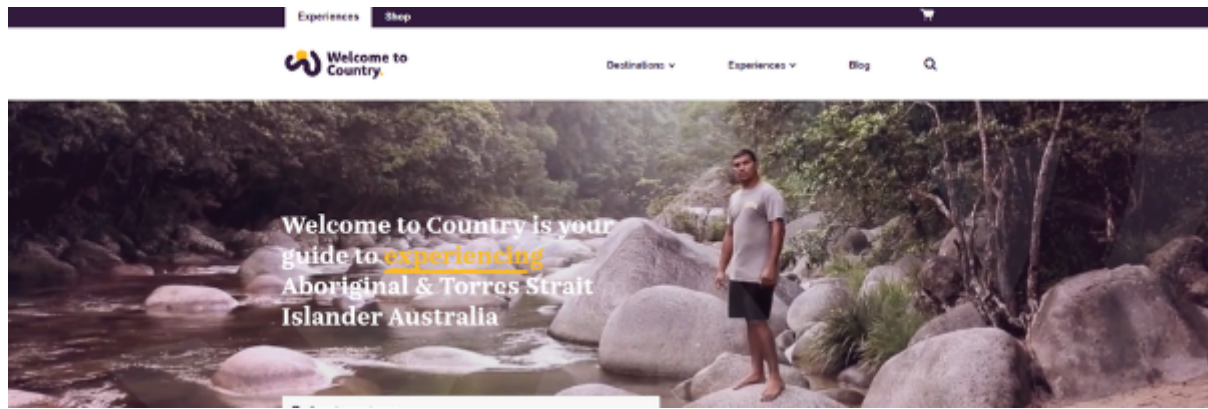
*Forest Sky Pier at Niigi Niigi (Sealy Lookout), Coffs Harbour*

### **New funding available for regional tourism in NSW**

Big ticket tourist attractions that will put regional towns on the map are set to receive a significant funding boost, thanks to the NSW Government. The \$30 million Regional Tourism Activation Fund aims to strengthen tourism in regional NSW.

Two streams of funding are available for projects delivering unique and high-impact visitor experiences and for projects that will improve accessibility, inclusion and the visitor experience for people with disability. Applications will close on Wednesday 11 August 2021. For more information visit: [www.nsw.gov.au/RTAFund](http://www.nsw.gov.au/RTAFund).

New website connects users with Aboriginal and Torres Strait Islander culture



Welcome to Country is a new online marketplace for experiencing Aboriginal and Torres Strait Islander Australia. The website offers a diverse range of cultural activities and experiences across the country. It also makes it easy to purchase beautiful products that directly benefit Aboriginal and Torres Strait Islander artists and communities. Whether you want to join a walking tour, experience storytelling, sample bush tucker, immerse yourself in Indigenous art and culture, or seek accommodation, Welcome to Country gives you access to the best experiences.

If you're a Crown land manager and operator of Aboriginal and/or Torres Strait Islander experiences, we encourage you to register your interest to be considered as a Welcome to Country operator.

## Annual reporting reminder

Non-council Crown land managers need to submit annual reports each year, as prescribed in the [Crown Land Management Regulation 2018](#). The FY2020-21 annual report must be submitted by **31 October 2021** via the [Reserve Manager Portal](#).

## Share your stories

Sharing stories is a great way to learn from each other and recognise the hard work and dedication of reserve managers. If you would like to share your story, please get in touch. To find out more about reserves we have profiled, visit our [Meet our Managers](#) webpage.

## Contact

Council Crown land managers: [council.clm@crowmland.nsw.gov.au](mailto:council.clm@crowmland.nsw.gov.au)

Non-council Crown land managers: [reserves@crowmland.nsw.gov.au](mailto:reserves@crowmland.nsw.gov.au)

1300 886 235

[reservemanager.crowmland.nsw.gov.au](http://reservemanager.crowmland.nsw.gov.au)



Department of Planning, Industry & Environment, Parramatta Square, 12 Darcy Street, Parramatta, NSW  
2150, Australia

[Unsubscribe](#)